



Department of History  
and Welsh History

---

Postgraduate studies in

# History and Welsh History

---

# Contents

Welcome	p.1
Our courses	p.4
Research degrees	p.9
Our research	p.10
Employability	p.12
Extra curricular activities	P.13
Student profiles	p.15



## Important information

The programme information published in this brochure was correct at time of going to print (May 2021) and may be subject to change. Prospective students are advised to check the definitive programme information, including entry requirements, that is available on our website before making an application, to ensure that the programme meets their needs.

# Welcome

Welcome to the Department of History and Welsh History. My name is Professor Phillipp Schofield and I am Head of the Department of History and Welsh History here at Aberystwyth University.

History has been taught at Aberystwyth since the foundation of the University in 1872, making the Department of History and Welsh History the oldest history department in Wales and one of the first in Britain. The Department is one of the principal centres of teaching and research in Welsh history from the medieval period to the present day. We pride ourselves on the range and depth of our research expertise, from the medieval to the modern and contemporary periods.

Students choose to study history at Aberystwyth for several reasons. Aberystwyth is a beautiful seaside town with excellent resources for historians, such as the National Library of Wales, one of only five copyright libraries in the United Kingdom and only a few minutes' walk from the department. Our teaching and research covers a wide range of specialisms, including Medieval and Early Modern History and Modern History.

Our lecturers also conduct world-class research which feeds into all our degree programmes. This means that you can learn directly from experts who are undertaking the latest historical research. We currently have a number of exciting research projects underway in the department. One of these, the Imprint Project, a project on medieval seals, sees our researchers working in conjunction with forensic scientists to investigate fingerprints on seals, bringing together science and history to better understand the past.

"Why should you choose Aberystwyth?" The simplest answer is that we will nurture your passion and enthusiasm for history and allow it to grow so that it sustains you intellectually and in the world of work. A postgraduate degree in History from Aberystwyth University will provide you with the skills you need to enter the career of your choice. We offer modules, work placements and experiences that will help prepare you for work. Studying History at postgraduate level will further develop your critical thinking, communication, research, interpretation and analytical skills, making you a competitive candidate for a range of careers, including academia.

Our graduates have gone into professions such as the police force, the heritage sector, journalism, broadcasting, the civil service, education and politics.

We offer support to students who wish to undertake a work experience placement in an institution that engages with history on a daily basis. This is an opportunity to experience an area of work that you might consider for your future career.

At the heart of our degrees we offer a choice of modules that reflect our research specialisms across a wide range of periods and themes throughout History. We offer a 'hands on' approach to the study of History, and engagement with primary sources is central to our teaching. Alongside lectures

your modules will offer workshops and seminars allowing you to explore a topic from a variety of angles and teaching styles. You will receive intensive training in research skills and methodology during the course, and will also be able to tailor additional research training modules to your own particular research interests.

Information about our degrees and modules are included in this booklet. If you have questions about any of our courses or about the department, do please get in touch. I look forward to meeting you in Aberystwyth.

**Professor Phillipp Schofield**  
Head of Department



# Our courses

## Taught degrees

History and Heritage	p.3
History of Wales	p.4
Medieval Britain and Europe	p.6
Modern History	p.8

## Research degrees

MPhil, PhD	p.9
------------	-----

# History and Heritage

## MA

This degree has been developed for those who are interested in the academic study of history, and those who are interested in pursuing careers in the heritage industry itself.

The course offers you the opportunity to explore key concepts and debates in heritage studies, to acquire heritage-related business skills, and to participate for academic credit in a work placement or internship with a leading heritage organisation such as the National Library of Wales, the Royal Commission on the Ancient and Historical Monuments of Wales, and the National Trust, developing your practical experience in this field.

Specialist opportunities for History and Heritage students at Aberystwyth include:

- the opportunity to undertake a work placement with a leading heritage organisation
- benefitting from our strong links with the Royal Commission on Ancient and Historical Monuments and the National Library of Wales - two nearby and significant heritage organisations
- being taught by lecturers who are research active and are recognised as leading authorities in their respective fields.

### Employability

Our graduates have expansive and varied careers in museums and archives, heritage administration, tourism, public administration, the civil service, local government, teaching, journalism, the broadcast media and publishing.

## Modules

Core modules that you will study on this course include:


- Concepts and Sources in Heritage Studies
- Research Methods and Professional Skills in History
- Working with History.

You will also study a range of optional modules from a selection, which currently includes:


- Landownership and Society in Wales
- The British Atlantic World in the Long Eighteenth Century
- Post Medieval Palaeography and Diplomatic
- Rare Books and Special Collections
- Information and Society
- Science, Place and Victorian Culture
- Class and Community in Wales, 1850-1939
- Sources for Postgraduate Research in the Modern Humanities and Social Sciences.

For more details and the latest information on our modules, see our website.

## Key Facts

 Degree type: MA.

 Course Code: V192W.

 Duration: 1 year (full-time) or 2 years (part-time)

# History of Wales

## MA

This degree offers you the opportunity to explore the history of Wales from a variety of thematic and chronological perspectives, to develop your research skills in Welsh history (including Welsh language tuition), and to pursue your own research project in an aspect of Welsh history under expert supervision from a specialist in the field.

This course draws on the unrivalled expertise of our team of Welsh historians in the Department to offer a degree scheme suitable both for those who have studied Welsh history in the past and those for whom it is a new field of study.

Specialist opportunities for History of Wales students at Aberystwyth include:

- the opportunity to undertake a work placement with a leading heritage organisation
- our close proximity to the National Library of Wales, one of five UK copyright libraries, which lies adjacent to campus
- benefitting from our strong links with the Royal Commission on Ancient and Historical Monuments, based in Aberystwyth
- being taught by lecturers who are research active and authorities in their respective fields.

### Employability

Our graduates have expansive and varied careers in museums and archives, heritage administration, tourism, public administration, the civil service, local government, teaching, journalism, the broadcast media and publishing.

## Modules

Core modules that you will study on this course include:

- The Making of Modern Wales
- Research Methods and Professional Skills in History.

You will also study a range of optional modules from a selection, which currently includes:

- Class and Community in Wales
- 1850-1939
- Gerald of Wales
- Landownership and Society in Wales
- The British Atlantic World in the Long Eighteenth Century
- Information and Society
- Post Medieval Palaeography and Diplomatic
- Science, Place and Victorian Culture
- The Second World War in History and Popular Memory
- Working with History
- Sources for Postgraduate Research in the Modern Humanities and Social Sciences.

For more details and the latest information on our modules, see our website.

## Key Facts



**Degree type:** MA.



**Course Code:** V194.



**Duration:** 1 year (full-time) or 2 years (part-time)





# Medieval Britain and Europe

## MA

This degree draws on the strengths of the Department in the field of British and European history from the Norman Conquest to the Reformation. It offers you the opportunity to investigate medieval Britain within its wider European context and from a variety of thematic angles including political, cultural, economic, social and religious history. A programme of intensive Latin and palaeography training is integral to the scheme.

Specialist opportunities for Medieval Britain and Europe students at Aberystwyth include:

- the opportunity to undertake a work placement with a heritage organisation
- our close proximity to the National Library of Wales, one of five UK copyright libraries, which lies adjacent to campus
- benefitting from our strong links with the Royal Commission on Ancient and Historical Monuments, based in Aberystwyth
- being taught by lecturers who are research active and authorities in their respective fields.

### Employability

Our graduates have expansive and varied careers in museums and archives, heritage administration, tourism, public administration, the civil service, local government, teaching, journalism, the broadcast media and publishing.

## Modules

Core modules that you will study on this course include:

- England in Context in the Long Thirteenth Century
- Latin for Postgraduate Study
- Medieval and Post Medieval Palaeography and Diplomatic
- Research Methods and Professional Skills in History
- Texts that Made the Middle Ages: Advanced Latin Reading for Postgraduate Students.

You will also study a range of optional modules from a selection, which currently includes:

- Gerald of Wales
- History and Identity in the Age of the Magna Carta: the World of Matthew Paris
- Working with History
- The Baltic Crusades, 1147-1290.

For more details and the latest information on our modules, see our website.

## Key Facts



**Degree type:** MA.



**Course Code:** V192X.



**Duration:** 1 year (full-time) or  
2 years (part-time)





# Modern History

## MA

This degree offers you the opportunity to study modern British, continental European, American and/or world history from the early 19th century to the present with a team of leading specialists in their fields.

The course embraces a range of perspectives including political, diplomatic, social, cultural and media history, and also provides you with intensive training in research skills and methods for modern history, including the opportunity to develop or enhance your knowledge of a European language.

Specialist opportunities for Modern History students at Aberystwyth include:

- an introduction to and instruction in a variety of modern history sources and archival resources
- training in a European language
- the opportunity to undertake a work placement with a heritage organisation
- our close proximity to the National Library of Wales, one of five UK copyright libraries, which lies adjacent to campus.

### Employability

Our graduates have expansive and varied careers as archivists, publishers, in local and national politics, tourism, heritage administration, public administration, real estate, law, the Civil Service, journalism, broadcast media, the armed forces, education, management, accountancy, entrepreneurs and in further study.

## Modules

Core modules that you will study on this course include:

- Key Themes in Modern History
- Research Methods and Professional Skills in History.

You will also study a range of optional modules from a selection, which currently includes:

- Sources for Postgraduate Research in the Modern Humanities and Social Sciences
- The British Atlantic World in the Long Eighteenth Century
- Science, Place and Victorian Culture
- Borders and Borderlands in Modern Asia
- Representations of the Holocaust, 1945-2020
- The Second World War in History and Popular Memory
- Landownership and Society in Wales
- Class and Community in Wales 1850-1939
- Working with History.

For more details and the latest information on our modules, see our website.

## Key Facts



**Degree type:** MA.



**Course Code:** V140.



**Duration:** 1 year (full-time) or 2 years (part-time)



# Research Degrees

## MPhil, PhD

The Department offers MPhil and PhD degrees, which provides you with the opportunity to undertake advanced historical research under the expert supervision of members of our academic staff.

We offer research supervision in all our areas of research expertise, and have supported students from a wide range of academic and non-academic backgrounds to the successful completion of their research degrees. Individual supervision is supplemented by departmental and University-level research training, and all our research postgraduates are warmly encouraged to participate in the wider research culture of the Department.

### MPhil and PhD

These focus on research projects and involve in-depth study within a specific field which is compatible with the research interests of the Department and the University. Work produced is original and publishable, the results of which are presented in a thesis and through an oral examination.

The MPhil is a one-year course (or two years part-time) where you will be expected to produce a thesis of up to 60,000 words.

A PhD is awarded upon the satisfactory completion of a thesis of up to 100,000 words, followed by a viva voce examination. The normal period of registration is three years (full-time) and it is expected that the thesis will be submitted within four years of your initial registration.

For further information see our How to Apply pages, or contact us.



# Research

The main focus of the Department's research is on four chronological periods – Medieval, Early Modern, Modern British and European and Modern Wales – and three thematic areas: Historiography; Technological, Scientific and Medical History; and Media History.

In addition, the Department maintains traditional strengths, in the broadest terms, in religious, political, cultural, social and economic history.

- In terms of its research agenda, the Department aims to:
- generate and disseminate new research
- transfer research knowledge and skills to all graduates

support and find opportunity to develop collaborative activity, both within the Department and with partners in other universities in the UK and beyond.

The Department is home to several leading and innovating research centres:

- Centre for Media History
- Centre for the Social and Cultural History of Wales
- Centre for Research in Historiography and Historical Culture.

## Centre for Media History

This interdisciplinary research centre, a joint venture between the Department of History and Welsh History and the Department of Theatre, Film and Television Studies, aims to promote the exploration of media in a specifically historical context, and to promote teaching and research in the field of media history. It seeks to publicise and popularise the use of media and media-related sources as key research tools for a wide range of historical studies, and works closely with the National Library of Wales and its unrivalled newspaper and screen and sound archives.

Our research expertise is internationally recognised, and the journal *Media History* is currently based at the University.

## Centre for the Social and Cultural History of Wales

This Centre aims to promote the study of the history of Wales across all chronological periods; supports individual and collaborative research projects; and stimulates critical analysis of the development of Welsh historiography. It also arranges research seminars and organises day schools and conferences on key themes in the history of modern Wales. The Centre's research expertise spans the medieval, early modern and late modern periods, and includes themes such as: the medieval church; early modern religion; modern urban developments and public health; the media, music and popular culture; missionaries and imperialism; and ethnic minorities and national identity. This concentration of expertise in Welsh history is unmatched by any other department in the UK.

## Centre for Research in Historiography and Historical Culture

The Centre aims to promote the exploration of past and current trends in historiographical and other representations of the past. It also seeks to explore the relationships between academic and amateur historians' engagements with the past, and to promote teaching and research in the fields of historiography and historical cultures. The Centre has international contacts in South Korea, Germany, Norway, Japan and the USA; and has received research funding from the British Academy, the AHRC, and the Huntington Library (California). The Centre is currently preparing a second edition of the Department's successful historiography textbook *Making History* (ed. P Lambert and P Schofield, 2004).





# Employability

## Work experience opportunities and Transferable skills

### Work experience opportunities

Studying History at Aberystwyth University provides you with a firm foundation for your future career. History as a subject is valued by employers in many sectors and our graduates are successful in gaining positions across a diverse range of roles within the graduate job market.

As a Department, we place great emphasis on work experience during your studies. Some of our postgraduate degrees include a work experience placement as a core part of the course, but students can sign up to the work placement module on any of the MA schemes.

### Transferable skills

The skills that you acquire on your History degree are versatile, wide-ranging and transferable and will prepare you for a wide range of professions.

These skills include the ability to:

- analyse large amounts of data
- communicate knowledge, ideas and arguments intelligibly and efficiently, verbally and on paper
- conduct independent research
- construct logical argument
- interpret different types of sources
- lead discussions, presentations and debates
- manage time and workloads
- think critically, imaginatively creatively and independently
- work effectively in teams.

With a postgraduate degree in History, you can look forward to an expansive and varied career. You will be well prepared for a career in a range of sectors, including:

- archiving
- publishing
- local and national politics
- tourism
- heritage administration
- public administration
- real estate
- law
- the Civil Service
- journalism
- broadcast media
- the armed forces
- education
- management
- accountancy
- entrepreneurship.



# Extra curricular activities

In addition to your academic studies, you will have the opportunity to take advantage of the following:

- the wider research culture of the department
- the close links with other centres of historical study in the university and - through conferences, workshops and its series of research seminars - access to a wide range of international scholarly networks
- the activities of the Institute of Medieval and Early Modern Studies (IMEMS), a joint research partnership between Aberystwyth and Bangor Universities
- the proximity of a number of research-led institutions that are useful to historians of many periods and interests and the strong links that the department has with these - including the National Library of Wales, the Centre for Advanced Welsh and Celtic Studies, the Royal Commission on Ancient and Historical Monuments in Wales, and Ceredigion Archives
- the Aberystwyth University History Society which brings together students from across the department and academic years, and which is an opportunity to take part in social events and trips to museums and galleries and other history-rich venues.







# Student profiles



## Hannah Pass

### MA Modern History (2020-21)

My MA degree course has allowed me to study various elements of modern history, stretching back to the seventeenth century. It is such a great MA degree, with a variety of modules that offers you a diverse range of historical topics to choose from.

I chose to continue studying at Aberystwyth University after finishing my undergraduate degree because I really loved the department. The history department staff are so friendly and are always on hand to help you with anything you need! They are very much invested in your personal development and push you to be the best version of yourself.

The course has allowed me to develop my own research interests and the facilities available are a bonus. The Hugh Owen library has such a broad availability of material and we also have the National Library of Wales so close by.

What I have loved most about my time at Aberystwyth University is the location - it is such a lovely place to live and study.



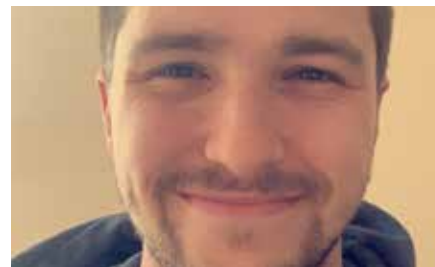
## Rhodri J. Norris

### Final year doctoral student: Department of History and Welsh History

I am studying for a PhD in history at Aberystwyth, exploring early modern piracy and warfare. I mostly use primary sources to study the past, many of which are available in electronic form online. The Hugh Owen library and National Library of Wales are wonderful resources which I use constantly.

Aberystwyth appealed to me over other universities due to its excellent facilities, good choice of courses, and unique size and position as a town. Studying at Aberystwyth is a rewarding experience, and help is always there when you need it. It is a positive environment to be in, with lots of space to study and concentrate on your work.

There is so much to love about the university, and it has really helped me find and develop my passion for history. The people you meet are truly a huge part of the experience in what is a very special town.



## Connor Johannes

### MA Modern History (2020-21)

I am currently studying a Modern History MA at Aberystwyth University. This course consists of a wide range of optional modules, as well as a few core ones, all designed to provide an engaging and educational experience.

Aberystwyth university was my first choice when I finished my 'A' levels and I have enjoyed every year that I have been here since. Not only is the place itself beautiful, but the university provides so many courses, focusing on areas of history that I had not previously thought of as intriguing. As a result of studying here, my passion for historical study and research has grown and the things I have learned here have shaped the path I want to take in the future.

My favourite part about studying at Aberystwyth has been the sense of community, knowing that fellow students and lecturers are just an email away if I need any help with my work, especially through the incredibly tough times we have all faced over the last year.



Department of History  
 & Welsh History  
 International Politics Building  
 Aberystwyth University  
 Aberystwyth  
 Ceredigion  
 SY23 3FE

☎ +44 (0) 1970 621917

@ history-enquiries@aber.ac.uk

🐦 /historyaber

Designed and produced by Global Marketing  
 and Student Recruitment, Aberystwyth  
 University 2021.