

CROESO  
WELCOME  
CROESO  
WELCOME  
CROESO  
WELCOME

# Your AberWelcome 2024 Guide

CROESO  
WELCOME



# A very warm welcome to you to Aberystwyth University

Many congratulations on taking up your place here in what is a wonderful place to live and study.

I took up the role of Vice-Chancellor in January 2024, and I am very excited to welcome you all as the first cohort of students in my first new academic year. Aber is very special to me, as some time ago now, I was also a new and nervous first year student, and later a PhD student, who was experiencing the apprehension of starting a new chapter in my life.

I love this University, its staff, its students and all our supporters. I hope that you too have the enriching, life changing experiences that I had. This is your place to grow both academically and personally, to achieve your potential and make your mark on the world. Since our foundation in 1872, Aberystwyth has been known for excellence in teaching and research.

Our focus is to ensure you have an outstanding education. You will be taught by subject-leading academics who will share with you the latest thinking and discoveries in their areas. We also provide outstanding student support, designed to ensure you get the most out of your studies and time with us here in Aberystwyth.

Over the next few days and weeks, you will be settling into your new environment, surrounded by new people, new experiences and a host of new opportunities.

Change can sometimes be a little daunting but be assured that there is a place for you here at Aber. Accessing this guide is the first step to informing yourself of all that is on offer and as you start to familiarise yourself with the University we want to help and support you in your transition, and for you to get to know the University better.

I wish you well for the first days and weeks at Aber, and hope to welcome you, in person, during welcome week.



**Professor Jon Timmis,**  
Vice-Chancellor



## AtAber – Extended Induction

**This is your place to discover, learn and grow.**

As you start to familiarise yourself with the university we want to support your transition to university, and for you to get to know the University better. Our AtAber – Extended Induction themes focus on seven key areas that will allow you to make the most of your time with us during your transition.

We will have some events organised in relation to the various themes, from Aber Support and Wellbeing to Aber Languages and Careers during this transition period so please keep an eye on the Induction Planner.

Read more about our AtAber – Extended Induction themes from page 6 onwards.

### Contents

#### AberWelcome

AberArrival Checklist	2
Your Campus	4

#### AtAber – Extended Induction

Aber Belong	6
Aber Study	7
Aber Support and Wellbeing	8
Aber Languages and Careers	10
Aber Environment and Sustainability	11
Aber Skills	12
Aber Community and Culture	13

# AberArrival Checklist

- Connect to Campus Wi-Fi
- Get involved in Welcome Week Events and Activities
- Meet your department
- Complete your Course Enrolment
- Visit the Freshers Fair
- Explore Campus
- Complete the Online Consent Training
- Register with a GP
- Remember to speak up if you ever need help during your Aber Arrival

International Student Checklist Extras:

- Organise your Visa Documentation
- Open a UK Bank Account

You can access a more detailed checklist here:



## 1 Connect to Campus Wi-Fi

When you arrive on campus ensure you connect to the university's main wireless network, called eduroam. You can then stay connected wherever you are on campus.

## 2 Get involved in Welcome Week Events and Activities

Welcome Week is a week of events and activities organised by various teams across the University for new students to get involved in! It's all aimed at welcoming you to campus, getting you settled, making friends and connections, feeling at home and familiarising with the campus.



## 3 Meet your Department

Your Academic Induction is an important introduction to your course and subject before the work begins. This will be held over several days during your Welcome Week. Your department will have a range of activities planned over the week and beyond.



## 4 Complete your Course Enrolment

Remember before you can be known as a full-time or part-time student at Aberystwyth you will need to complete registration. If you find you need help to complete the Online Registration task or have other queries, you can go to the Registration Zone during Welcome Week:

**Monday 23 Sept - Wednesday 25 Sept**  
09:00-17:00 | Hugh Owen Library

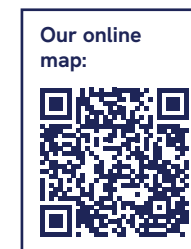
## 5 Visit the Freshers Fair

The Freshers Fair organised by Undeb Aberystwyth (Students' Union) is a showcase of everything student life has to offer. Each day there will be a mix of different businesses, sports clubs, societies and local organisations present. This is an unmissable part of your AberWelcome.



## 6 Explore Campus

We always recommend new students to take some time to explore our lovely campus and beyond. You will be able to see what facilities we have which you can take advantage of - from our great study areas, cafes and green spaces to our new sports dome and so much more.



## 7 Complete the Online Consent Training

Aberystwyth is a safe, equitable and inclusive university. We are committed to continually making our campus a safer place, with a zero tolerance to harassment, any hate crime, abuse and bystander behaviours. By learning more about consent and completing the training, help us keep Aberystwyth safe.



## 8 Register with a GP

When you arrive at Aberystwyth we recommend that you register with a GP (family doctor) locally. We want to ensure that there is support and advice available to help you register with a GP.



## If you ever need help during your Aber Arrival

Staff will be on hand through the arrival period and we have a list of key contacts in our detailed checklist.

## Your Campus

### Your Libraries

Across our campus and in Aberystwyth town centre, there are a number of study spaces including two university libraries, perfect for group and individual studying. Across all study spaces students have access to computers, photocopying and printing services. In addition, all Aberystwyth students receive a free Microsoft Office package that can be downloaded on personal devices

Find out more about our library services, facilities and resources:



### Your Accommodation and Residence

Moving into your accommodation is an exciting time – however it can feel a little daunting. We can help this process by giving you practical information about your residences.

Find out loads of information on the ResLife webpages regarding a variety of areas that you need to know about like cleaning and inspections, laundry facilities, mail, parking, waste and recycling to secure cycle storage and much more.

Take a look:



## Your Sports Facilities

We offer a vast range of sports facilities on campus with a focus of ensuring every student and member of staff has the opportunity to get involved, regardless of ability or interest. Whether you want to try something new or are dedicated to your chosen activities, our Penglais Campus offers facilities that range from a swimming pool and gym to a floodlit 3G pitch, squash courts and even a Nordic saunarium.

Our brand new gym is kitted out with 130 training stations, including bikes, rowing machines and treadmills. Users can monitor their progress on digital screens powered in many cases by the energy they generate as they train.

Book an Induction here:



## Your Undeb Aberystwyth (the Students' Union)

Undeb Aberystwyth (the Students' Union) wants Aber students to love student life, and works to ensure that Aber students are happy, healthy and empowered, with lasting friendships and promising futures.

Every student at Aberystwyth University is automatically a member of Undeb Aberystwyth, and being a member comes with some great benefits to help you through your time at University; Whether you want to join a sports club or society (we have over 100), want to volunteer or represent other students academically or otherwise, or just want some independent advice, then we are here for you!

Have a look at Undeb Aberystwyth's website for more information and for a full list of events:



## Your Arts Centre

Our award-winning Arts Centre on campus is the perfect place to see a show, watch a film, enjoy some treats and socialise with friends. There is something here for everyone, whether it is a London West End show or the ballet on tour, the latest film releases, specialist films, a range of festivals or some of the biggest names in comedy.

The Arts Centre hosts performances from major national and international touring companies, as well as producing its own in-house productions. Performances are presented in the Centre's 1,200-seat concert hall, 300-seat theatre and in the more intimate studio, and there's a busy programme of screenings in the 120-seat cinema.

Take a look:



## Your Campus Cafés and Restaurants

Our cafes and restaurants prides itself on ensuring that all allergens and dietary requirements are catered for. Therefore, we try to ensure that there is adequate variety and consistency in our food options throughout our outlets across campus.

You can now take advantage of our fantastic value 'Eat with us, shop with us' flexible meal plan packages even if you are living in self-catered accommodation or private housing in town! Eat what you want, when you want, where you want, from hot dinners to Starbucks on the go or just pick up some ingredients to cook yourself.

Learn more:





## 1 Ymgartrefu Aber Aber Belong

### **This is Your Place for an Aber Life!**

Aber Belong is about making friends and connections, feeling at home and familiarising with the campus.

### **Induction Planner**

Use the new Welcome and Induction Planner to help you navigate the events specific for you during Aber Welcome Week 2024 and the first few weeks at the University.

Find out about all of the departmental activities organised for you, as well as the extracurricular opportunities at Aber. To make the most of your first University experiences, meet new people or just have fun use the Induction Planner to find out what events are going on.

Take a look:



## 2 Astudio Aber Aber Study

### **This is Your Place to Learn and Develop!**

Aber Study is about developing good practices in your studies, and to familiarise yourself with our library services.

### **Our Libraries and Study Spaces**

The Hugh Owen Library is the main University Library and the centre of administration for Information Services. Based on Penglais campus it provides a space to study, whether you wish to study quietly on your own or with others. A range of facilities are provided both to help you with your studies and for quiet relaxation.

The Physical Sciences Library is also located on the main Penglais Campus and houses the Computer Science, Maths and Physics collections, as well as plenty of study spaces.

You can access our libraries and study spaces with your Aber Card. There are a variety of silent, individual and group study spaces available in the Iris de Freitas Room and on Level D and Levels E & F of the Hugh Owen Library.

### **Study Materials**

Search find and discover electronic resources, books, journals, newspapers and much more using Primo, our library catalogue. You can search for everything the library has to offer from a single search box. Add items to your favourites, use Primo off-campus, request items, use your reading list to find books and so much more.

Take a look:



### **Study Help and Support**

Subject Librarians provide information skills training and in-depth subject support for students and staff, and liaise with academic departments regarding their library and information needs and use of Aspire Reading Lists.

You can email, phone or book an appointment with your Subject Librarian for help and advice on using the libraries, finding materials for assignments, referencing and more!

Learn more:



## 3 Cefnogaeth a Lles Aber Aber Support and Wellbeing

### This is Your Place to Thrive and Be Supported!

Aber Support and Wellbeing is all about you being able to thrive and feel supported from the services we can provide you. Support is here when you need it.

### Student Services

Student Services are here to help you make the most out of your time at Aberystwyth University and maximize your opportunities after graduation. Working collaboratively across the University and with external services, we offer all students a range of support and resources, no matter what challenges you might face.

Our friendly teams are available all year round, Monday to Friday, to give advice and support on a wide range of subjects, including accessibility requirements, wellbeing needs, financial advice, visa support, and career guidance.

Learn more:



### Accessibility Service

We aim to provide all students with an experience of the highest quality, and to make our academic facilities available to all who meet our entrance requirements. For disabled students, those with long standing physical/mental health conditions or a specific learning difference, we aim for an inclusive curriculum accessible to all, adapted accommodation, and access to learning areas which are equipped with computers, special hardware, additional software and laptop access. We can offer you advice on individual examination arrangements and enabling technology so that you can reach your full potential and get the good results you deserve.

### Advice and Money Service

The Advice and Money Service provides information and support for topics including money management, student finance issues & hardship. We can provide you with information about University rules and regulations including academic regulations or harassment. We can advise you on withdrawal or change of course and what to do if unforeseen circumstances affect your studies. If you are unsure about where to go for advice or assistance please contact us.

### Wellbeing Service

The Student Wellbeing Service understands the importance of maintaining a healthy wellbeing to enable students to thrive in their time here at Aberystwyth University and beyond. We are here to help any student with any wellbeing issue, whether it is an issue about friendship, bereavement, anxiety or workload stress, mild to moderate or severe and enduring mental health issues.



### Harassment and Misconduct: Prevention and Support Service

Aberystwyth University is committed to promoting a safe and supportive campus environment for every member of our community. Whether you have experienced sexual harassment or sexual violence yourself, or you're supporting someone who has, we offer support options, reporting options, and where to go for further advice:



### Visa Support and Advice

We provide specialised support to students and their dependents who need advice on Visas to protect their immigration status in the UK, including Visa extensions and post-study options.

## 4 Ieithoedd a Gyrfaoedd Aber Aber Languages and Careers

### This is Your Place for Real World Experiences!

Aber Languages and Careers is about you growing beyond boundaries. Find out about languages you can learn, practical opportunities to enhance your employability and real world opportunities whilst you're here in Aber.

### Lifelong Learning

Lifelong learning offers you unique learning opportunities, which can boost your degree and help you stand out from the crowd.

Alongside your degree programme, you can take one short course per term, free of charge, in a wide range of subjects including: Languages, Professional Development, Ecology, Art and Design, Creative Writing, Archaeology, Genealogy, History, Natural History Illustration.

Study courses that complement your degree, pursue a subject that you're passionate about, work towards a qualification or simply try something new and learn for the fun of it!

#### Courses:



### Careers Service

The Careers Service provides an excellent and supportive service which empowers individual students and graduates to realise their aspirations, make informed life choices and achieve their potential. The Careers Service is here to help you understand how you can make your university degree, and all the experiences open to you whilst at University, count towards your future career.

### Welsh Language

Did you know that Welsh is one of the fastest growing languages in the UK, according to Duolingo? Aberystwyth University is a bilingual institution where Welsh is used routinely in its teaching and administration. We operate a bilingual policy to ensure that the Welsh language is treated no less favourably than English.

During your time in Aberystwyth, you may like to learn some Welsh. There are plenty of opportunities to do so here at the University. If you are under 25, you can register on a Welsh course for free.

#### Learn more:



## 5 Amgylchedd a Chynaliadwyedd Aber Aber Environment and Sustainability

### This is Your Place to Make a Difference!

Aber Environment and Sustainability is an opportunity to bring together the diverse and extensive sustainability work that we are involved in. You can get involved and celebrate our sustainability projects and initiatives from areas like biodiversity to transport.

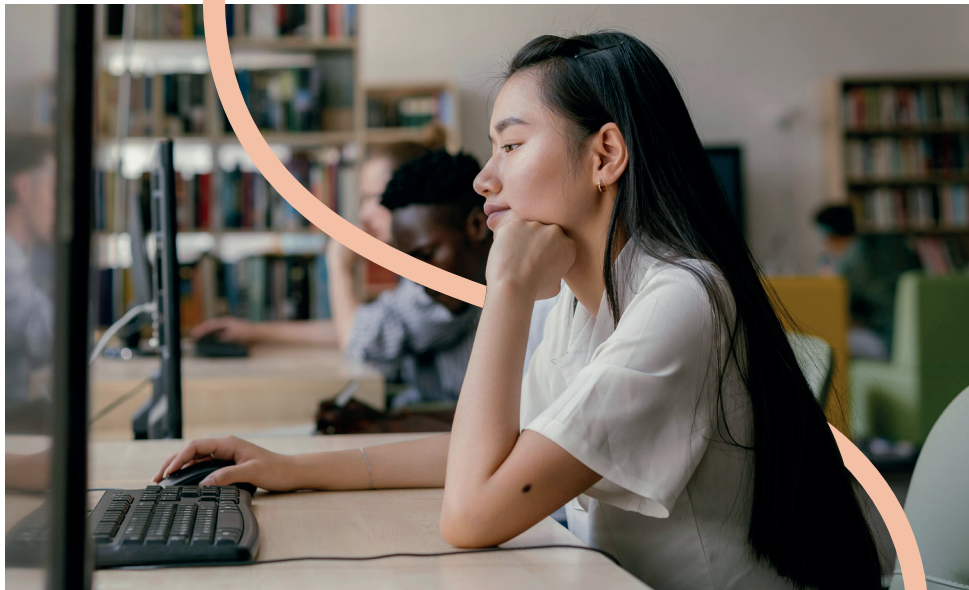
### On the path to net zero

At Aber, we're leading the sector with our ambitions to become a carbon neutral campus by 2030. Since 2020, we have invested over £6M in energy efficiency measures such as LED lighting, and £3.3M in renewable energy projects. We also plan to plant over 90,000 trees by 2025, with 16,000 planted already.

We have a range of opportunities and events for you to get involved in on our student engagement webpage.

#### Get Involved:





## Sgiliau Aber Aber Skills

### **This is Your Place to Be Digitally Skilled!**

Aber Skills is about helping you to expand, explore and improve your digital skills as a student here in Aber! Learn with us about digital discovery tools, how artificial intelligence can be used for your own good, to even building your own LinkedIn account.

### **AberSkills Portal**

AberSkills is a centralised bilingual platform providing a comprehensive range of skills guidance, advice, resources, and support all conveniently located in one place. Whether seeking assistance with writing assignments, refining mathematical and statistical abilities, or participate in workshops focused on good academic practices and skill development, AberSkills offers a user-friendly space for you to develop and improve various aspects of your skill set.

Learn more:



## Cymuned a Diwylliant Aber Aber Community and Culture

### **This is Your Place to Explore!**

Aber Community and Culture is about exploring our community and your new home from home. We want to make you aware that you're never far away from an enriching cultural experience here at Aber and the surrounding area. Not only do we offer a great learning environment but a diverse and engaging campus community also.

### **Explore our campus and surrounding area**

We always recommend new students to take some time to explore our lovely campus and beyond. You will be able to see what facilities we have which you can take advantage of - from our great study areas, cafes and green spaces to our new sports dome and so much more.

Visit Aberystwyth town's numerous high-street and boutique shops, cafes and restaurants - and explore the local sights of the National Library, Cliff Railway, Constitution Hill, Seafront, Bandstand, Old College, Castle Ruins, Harbour and more.

Aberystwyth is surrounded by a beautiful environment also. Nestled between the Cambrian Mountains and Cardigan Bay it provides a rugged landscape of rolling hills, valleys, sand and sea. Even the famous national parks, of Snowdonia and Pembrokeshire, sit a short distance north and south of Aberystwyth, respectively, too which you should visit at some point. With three beautiful beaches to choose from: North Beach, South Beach and Tan-Y-Bwlch Beach, there's no better place try to spot some dolphins. Or in the summer, you can enjoy watching the sun go down with a small fire or BBQ.

### **Faith Space**

The Faith Space is somewhere that members of our University community can pray, meet and relax. Located in the Arts Centre, to the right of the Piazza Café, students and staff can access from the side of the building, from the concourse outside the Arts Centre/Students' Union.

The faith space is open 7 days a week. Between 8am-5pm any member of our community can access the space by swiping their Aber Card.


Learn more:





## Key Contacts

### 24/7 University Helpline

 01970 622900

### Academic Registry

 [ugfstaff@aber.ac.uk](mailto:ugfstaff@aber.ac.uk)

 [pgsstaff@aber.ac.uk](mailto:pgsstaff@aber.ac.uk)

 01970 622290

### Accommodation

 [accommodation@aber.ac.uk](mailto:accommodation@aber.ac.uk)

 01970 622984

### Around the clock Security

 [ssestaff@aber.ac.uk](mailto:ssestaff@aber.ac.uk)

 01970 622649

### I.S. Service Desk

 [is@aber.ac.uk](mailto:is@aber.ac.uk)

 01970 622400

### Multi-Faith Space

 [equality@aber.ac.uk](mailto:equality@aber.ac.uk)

 01970 628424


### Sports Centre

 [sports@aber.ac.uk](mailto:sports@aber.ac.uk)

 01970 622280

### Student Support and Wellbeing Services

 [student-support@aber.ac.uk](mailto:student-support@aber.ac.uk)

 01970 621761 or 01970 622087

### Undeb Aberystwyth (Students' Union)

 [union@aber.ac.uk](mailto:union@aber.ac.uk)

 01970 621700