

Aberystwyth University Estates Sustainability Strategy 2018 – 2021

1. Sustainability Policies

The University currently have four Environmental Policies:

- Environment Policy
- Fairtrade Policy
- Energy Policy
- Waste Policy

These are reviewed annually by the relevant sustainability working groups, and updated amended accordingly.

2. Sustainability Targets

Current sustainability targets are detailed in Table 1. Below.

Table 1. Sustainability Targets



Objective	Target	Environmental Management Programme	Responsible person (s)	Date achieved by (proposed)
Reduce Carbon Emissions by 40% by 2023/24 against the 2011/12 base year	Increase percentage of renewable energy used to 15% of total energy use by 2027	In line with CMS Detailed feasibilities for all resources Implementation Plan	Dew i Day Sustainability Advisor (Estates Development Department)	2027
	All site electricity provider from supplier with 100% green electricity by 2027	Electricity is procured through The Energy Consortium who can procure verified green electricity.	Dew i Day Sustainability Advisor (Estates Development Department)	2027
	Achieve BREEAM ratings of Excellent for new builds and at least Very Good for all major refurbishments	Included in Aberystwyth University Environmental Policy and Design Principles	Andrea Pennock - Director of Estates (Estates Development Department)	2017
Become a Zero waste University by 2027	Reduce waste generated by 20% by 2020 (in conjunction with targets from waste contractor Biffa - 20% diversion from landfill from January 2015 - January 2020)	Create waste management policy/strategy and waste management plan, and ensure its effective communication. Produce waste and recycling code of practice for staff and students.	Dew i Day Sustainability Advisor (Estates Development Department)	2020
	Zero waste to landfill from University residences and service/academic buildings by 2027	Review and implement waste management policy. Create waste management department specialising in waste and resource management across the whole University. Ensure adequate recycling bins are present within each flat/hall for mixed dry recycling, and appropriate collection points are available for glass, WEEE, batteries and other unusual items. Undertake waste audits and monitoring schemes.	Estates Development Department / Campus Services	2027
10% reduction by 2016 of water use across whole University	10% reduction by 2016 of water use across whole University	Water audit carried out by Dwr Cymru 2014 Installation of water saving devices/measures. Behavioural change campaign Grey / rainwater increased 15% 2018	Dew i Day Sustainability Advisor (Estates Development Department)	2016
Conservation Plan	Biodiversity Action Plan that reflects and engages with staff, students and the local community	Commitments and targets September 2018 Biodiversity links to and where appropriate is embedded in formal and informal curriculum activity	Dew i Day Sustainability Advisor (Estates Development Department)	2018

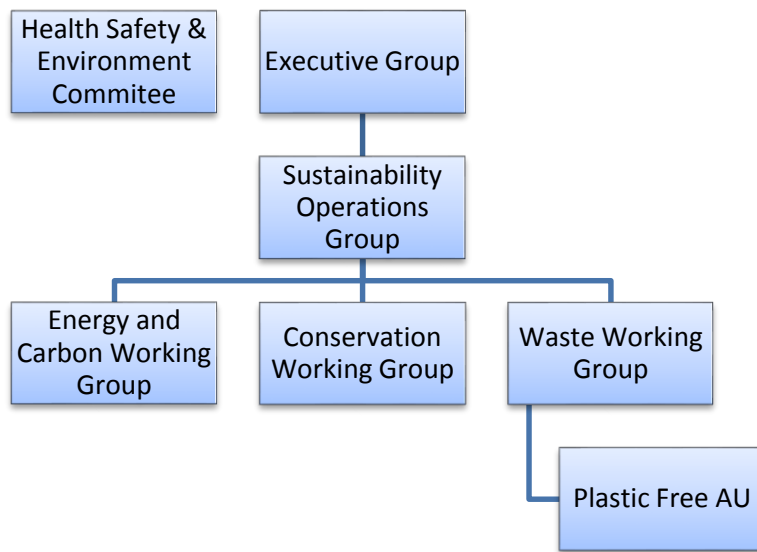
3. Working groups

Figure 1 below details the current structure of sustainability management at Aberystwyth University. The Executive group is where key approval/decisions are made. The HS&E Committee provides the governance and performance review.

The working groups underneath consist of key stakeholders for those areas and help to provide focussed action plans and opportunity identification.



Figure 1. – Structure of Sustainability working groups



4. Carbon and Utility Management Strategy

Carbon management at the university is detailed within the Carbon Management Strategy 2014 – 2021 document. We are currently reviewing a range of carbon management options including RE:FIT framework utilisation , Renewable Energy Technologies funded through PPA’s, Etc. – the outcome of which will help drive the universities future sustainability strategy.

5. Engagement strategy

All new staff are required to undertake an Environment awareness e-learning training module. A training needs analysis review is planned by the end of 2018-19 to identify further training requirements for key roles and activities.

Sustainability in the curriculum

- Coursework linked to sustainability projects within the university/estates department
- Sustainability sessions with MSc and BSc students in DGES and IBERS



6. Sustainable Transport

We are currently looking at installing electric charge points across the university to better support the electric vehicle market. We are also exploring electric fleet options.